



**The Australian Society
of Gynaecologic Oncologists**

27TH ANNUAL SCIENTIFIC MEETING

**STAND AND DELIVER
TARGETED THERAPIES IN
GYNAECOLOGIC ONCOLOGY**

11th – 14th April 2012

THE OBSERVATORY HOTEL, THE ROCKS, SYDNEY



2012 DRAFT ASGO SCIENTIFIC PROGRAM

Wednesday 11th April

12.30pm – 2.00pm	Pathology Session
3.00pm – 5.00pm	Mock OSCE and Assessment Workshop
6.00pm – 9.00pm	Welcome Reception and Casual Dinner/Opening of Exhibition and Sponsor Presentations at The Observatory (Family friendly evening)

Thursday 12th April

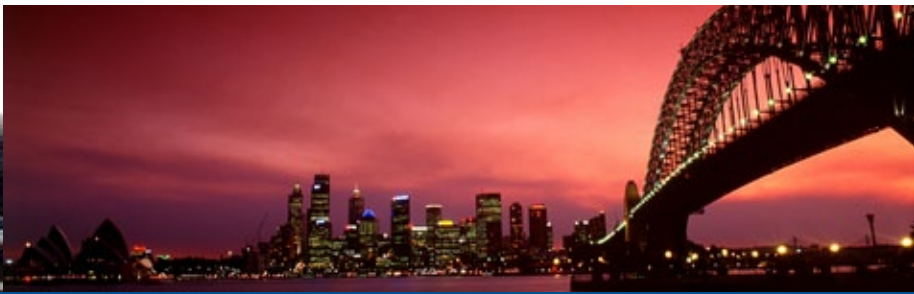
7.45am – 8.15am	Trade Exhibition Open
8.15 – 8.30am	Conference Opening
8.30am – 9.30am	Keynote Address ‘Targeted Radicality of Surgery for Cervical Cancer’ Presenter: Prof David Cibula, Head of the Gynaecological Oncology Department in the Teaching Hospital of the Charles University, Prague, Czech Republic
9.30am - 10.00am	Hitting the Target - Radiotherapy IMRT and Conformational Brachytherapy Presenter: Dr Mark Stevens, Radiation Oncologist, North Shore Hospital
10.00am – 10.30am	Collateral Damage – Hyperthermic Radiotherapy/Hyperbaric Oxygen Presenter: Dr Michael Jackson, Head of Radiation Oncology, Prince of Wales Hospital, Sydney
10.30am – 11.00am	Morning Tea and Trade Exhibition
11.00am – 11.35am	The AOCs study and New Molecular Targets for Ovarian Cancer Presenter: Dr Anna De Fazio, Head of the Gynaecological Oncology Research Group, Westmead Institute for Cancer Research at Westmead Hospital
11.35am – 12.10pm	The Histopathologist in the new Paradigm Presenter: Dr Lyndal Anderson, ICPMR, Westmead Hospital, Sydney
12.10pm – 1.00pm	Beyond PARP Inhibitors Presenter: Prof Michael Friedlander, Prince of Wales Hospital, Sydney
1.00pm – 2.00pm	Lunch and Trade Exhibition
2.00pm – 3.00pm	Free Presentations
3.00pm – 5.00pm	Luna Park for families and free afternoon
5.00pm – 7.00pm	Luna Park Reception on the Harbour – Family evening
7.30pm onwards	Free evening

Friday 13th April

8.00am – 8.30am	Trade Exhibition Open
8.30am – 9.20am	Keynote Address “Radical Surgical Approaches to Recurrent Disease” Presenter: Prof Michael Solomon, Colo-Rectal Surgeon and Director Surgical Outcomes Research Centre, University of Sydney
9.20am - 10.00am	“The Ethics of Introducing New Therapies” Presenter: to be confirmed
10.00am – 10.30am	Morning Tea and Trade Exhibition
10.30am – 11.15am	Keynote Address “Developing Post Fellowship Surgical Training and an Academic Surgical Career Pathway.” Presenter: Prof Michael Solomon, Colo-Rectal Surgeon and Director Surgical Outcomes Research Centre, University of Sydney
	Sponsored by: 
11.15am – 11.45am	RANZCOG Approach to Advanced Surgical Training Presenter: Dr Rupert Sherwood, RANZCOG and ASGO Representative
11.45 – 12.30pm	Surgical Training Panel Session Presenters: Prof David Cibula, Prof Michael Solomon and Dr Rupert Sherwood
12.30pm – 1.30pm	Lunch and Trade Exhibition
1.30pm – 3.30pm	Fellows Presentations
3.30pm – 4.00pm	Afternoon Tea
4.00pm – 5.00pm	Free Presentations
7.00pm – 11.00pm	ASGO Conference Dinner – Galileo Restaurant – (Adults Only)

Saturday 14th April

8.15am – 8.30am	Trade Exhibition Open
8.30am – 9.30am	HPV – New Targets Presenter: Prof Suzanne Garland, Royal Women’s Hospital, Melbourne
9.30am - 10.30am	Keynote Address: Sentinel Node Detection in Cervical Cancer Presenter: Prof David Cibula, Head of the Gynaecological Oncology Department in the Teaching Hospital of the Charles University, Prague, Czech Republic
10.30am – 11.00am	Morning Tea and Trade Exhibition
11.00am – 12.30pm	Tumour Board/Surgeons Corner
12.30pm – 1.30pm	Lunch and Trade Exhibition
1.30pm – 2.30pm	Free Presentations
2.30pm – 4.00pm	ASGO AGM
7.00pm – 11.00pm	ASGO Tony McCartney Black Tie Dinner (Adults only)



ABOUT THE LOCATION

The 27th Annual ASGO Scientific Meeting will be held at the five star Observatory Hotel, The Rocks, Sydney. The Observatory Hotel has world class facilities including an award-winning day spa, a stunning star-lit indoor pool and a gym. The hotel also offers a fine dining restaurant, Galileo, and a casual restaurant, Globe Brasserie & Bar, renowned for serving Sydney's finest afternoon tea.

The Observatory Hotel is the ideal base from which to explore Australia's most vibrant city. Positioned near The Rocks and the central business district, in the heart of Sydney, you are only minutes away from the fine selection of shops, museums, galleries and restaurants. The Rocks are nestled near the vibrant harbour and the world-famous Sydney Harbour Bridge and Sydney Opera House, giving you plenty to see and do.

2012 ORGANISING COMMITTEE

Russell Hogg (Chair)
 Sue Valmadre (Treasurer)
 Rhonda Farrell
 Greg Gard
 Selvan Pather

ABSTRACTS

Fellows' and ASGO Members are invited to submit abstracts. Abstract submission is essential to qualify for the discounted fellow's registration rate. Abstracts should be a maximum of 150 words, saved as a Microsoft word .doc file in Arial format, font size 12. Abstracts must be submitted to asgo12@yrd.com.au by no later than **1st February, 2012**.

REGISTRATION FEES

Full Delegate & Fellow Registrations includes:

- All scientific sessions
- Attendance at all social functions, including the welcome reception at the Observatory Hotel, Luna Park Reception on the Harbour and the two conference dinners.

* **Please note we have included the 2012 membership fee of \$150 in the ASGO Full Member Delegate Registration cost.**

Partner Registration includes:

- Attendance at all social functions, including the welcome reception at the Observatory Hotel, Luna Park Reception on the Harbour and the two conference dinners.

Registration Fees 2012	Early Bird before 1st February	Full Registration after 1st February
Full Member Delegate Registration (includes 2012 membership fees)	\$1,500	\$1,600
Fellow Delegate Registration	\$890	\$990
Full Non-Member Delegate Registration	\$1,550	\$1,650
Partner/Spouse Registration	\$550	\$650
Child registration 6 to 17 years (Welcome and Luna Park)	\$90	\$110

CONFERENCE SPONSORS

Gold Sponsor



Silver Sponsor

Thinking Australia® **CSL Biotherapies**

Bronze Sponsors

Abbott Diagnostics
Device Technologies
Gate Healthcare
Hologic

Karl Storz
Olympus
Roche Products
Sanofi Aventis

Sponsors confirmed at the time of printing

LOCATION

Access:

From Sydney Airport: 18 km – 30 minutes by car

From the closest railway station (Wynyard): 1 km – 8 minutes walk

From the ferry terminal: 1.5 km – 10 minutes walk

ACCOMMODATION



Observatory Hotel Deluxe Rooms

The Observatory Hotel's deluxe rooms have the comfortable, cosy atmosphere of a 'home away from home'. Elegantly appointed with mahogany custom-made furniture, each room features King or Twin beds and is decorated with the utmost attention to detail.

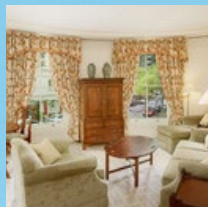
Deluxe Room – \$295.00 (incl breakfast for 1)



Observatory Hotel Junior Suite

Individual character, exceptional furnishings, spaciousness and elegant charm distinguish the Junior Suites.

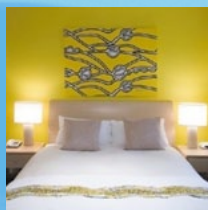
Junior Suite – \$395.00 (incl breakfast for 2)



Observatory Hotel Executive Suite

Named after the carriages of the legendary Orient-Express, our One Bedroom Suites are renowned for their classic elegance, exquisite fittings and intimate charm.

Executive Suite – \$415 (incl breakfast for 2)



York Apartments Two Bedroom Apartments (5-10 minute walk from the Observatory Hotel)

To accommodate 1-6 Guests, the Two Bedroom Suites consist of 1 x queen bed and 2 x single beds or 1 x double, full kitchen, lounge and dining room, 1 or 2 bathrooms, laundry and balcony. All Suites are fully furnished, air-conditioned and serviced daily.

Standard Two Bedroom Ensuite (Twin) – \$320.00

(1 x queen bed, 2 x single beds, 2 bathrooms)

Standard Two Bedroom Ensuite (Double) – \$320.00

(1 x queen bed, 2 x double beds, 2 bathrooms)

Standard Two Bedroom Executive – \$380.00

(1 x queen bed, 2 x single beds, study with sofa bed, 2 bathrooms)

***Please note that there are limited apartments available**